

European Economics Analyst

2023 Europe Outlook: Milder Recession, Higher Terminal Rate (Team Europe)

- We maintain our long-held view that the energy crisis will push the European economy into recession this winter, as surveys and production data point to a sizeable slowing in energy-intensive industries, and high inflation will reduce real household incomes. But we now see a shallower recession as the hard data have remained surprisingly resilient, the rebalancing of the gas market has reduced the risk of energy rationing and governments have provided significant fiscal support. We forecast that the Euro area economy will contract by only 0.7% from 2022Q4 to 2023Q2 (vs 1.1% before).
- That said, Europe's gas supply situation remains fragile, fiscal policy will probably slow growth in 2023-24 as the energy support winds down, and the gas crisis is likely to leave substantial supply-side damage. We therefore see a muted recovery and shave our growth forecasts for 2023H2 and 2024Q1. We now look for area-wide growth of -0.1% for 2023 and 1.4% for 2024, close to consensus over the next two quarters but slightly below for the remainder of 2023 and early 2024.
- Looking across countries, we expect Germany and Italy to be more affected by the energy crisis than France and Spain. Rising sovereign yields, high debt and weak growth leave Italy's new government on a narrow fiscal path, highlighting medium-run fiscal vulnerabilities. The French government struggled to build a majority around its 2023 budget and political uncertainty (including the chance of early elections) remains.
- Although gas prices have fallen significantly, we expect Euro area inflation to peak in December given continued energy pass-through and strong underlying momentum. Core inflation is likely to ease gradually over 2023 as goods price inflation cools, but we see sticky services inflation due to continued labour and energy cost pressures. We look for core inflation to end 2023 at 3.1% and 2024 at 2.2%.
- We expect the ECB to step down the pace of hiking to 50bp in December as the deposit rate approaches the neutral rate, the ECB staff cut their growth projections and the Fed slows its pace of hiking. But given a shallower recession and ongoing inflation pressures, we now look for the Governing Council to take the deposit rate to 3% with a final 25bp hike in May 2023. We expect ECB officials to decide in Q1 to start a passive unwind of its asset purchase

Sven Jari Stehn

+44(20)7774-8061 | jari.stehn@gs.com
Goldman Sachs International

Steffan Ball

+44(20)7774-0471 | steffan.ball@gs.com
Goldman Sachs International

Christian Schnittker

+44(20)7774-2269 | christian.schnittker@gs.com
Goldman Sachs International

Filippo Taddei

+44(20)7774-5458 | filippo.taddei@gs.com
Goldman Sachs International

Ibrahim Quadri

+44(20)7774-5864 | ibrahim.quadri@gs.com
Goldman Sachs International

Alexandre Stott

+44(20)7774-5256 | alexandre.stott@gs.com
Goldman Sachs International

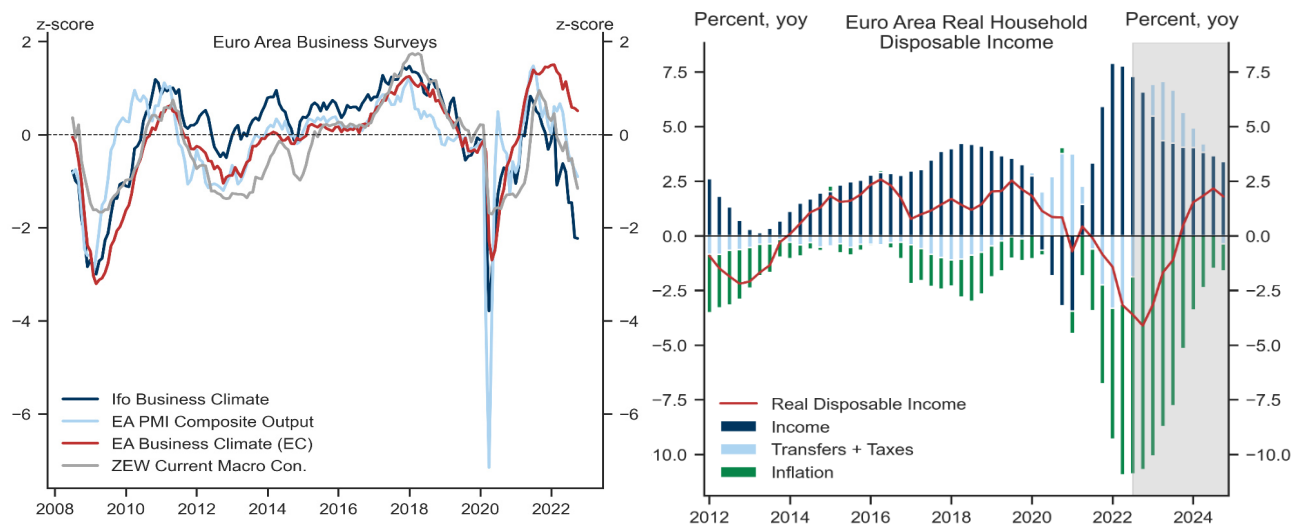
programme (APP) in Q2.

- While data revisions now suggest a slightly smaller UK contraction in H2, we continue to look for a deeper recession in the UK than in the Euro area given weak momentum, less fiscal support and supply-side constraints. The labour market has remained firm despite the slowing of the economy, pointing to persistent wage and inflation pressures ahead. Although we expect the BoE to step down the pace of hiking to 50bp in December, we think the BoE needs to take Bank Rate into significantly restrictive territory despite its dovish rhetoric and maintain our forecast for a terminal rate of 4.5% in May 2023.

Milder Recession, Higher Terminal Rate

We expect the energy crisis to push the Euro area into recession this winter. The surge in energy prices is likely to weigh notably on industrial activity and forward-looking indicators point to sizeable production cuts ahead, especially in gas-intensive industries (Exhibit 1, left). At the same time, we expect high inflation to reduce real household incomes sharply, which will likely push down consumer spending over the winter (Exhibit 1, right).

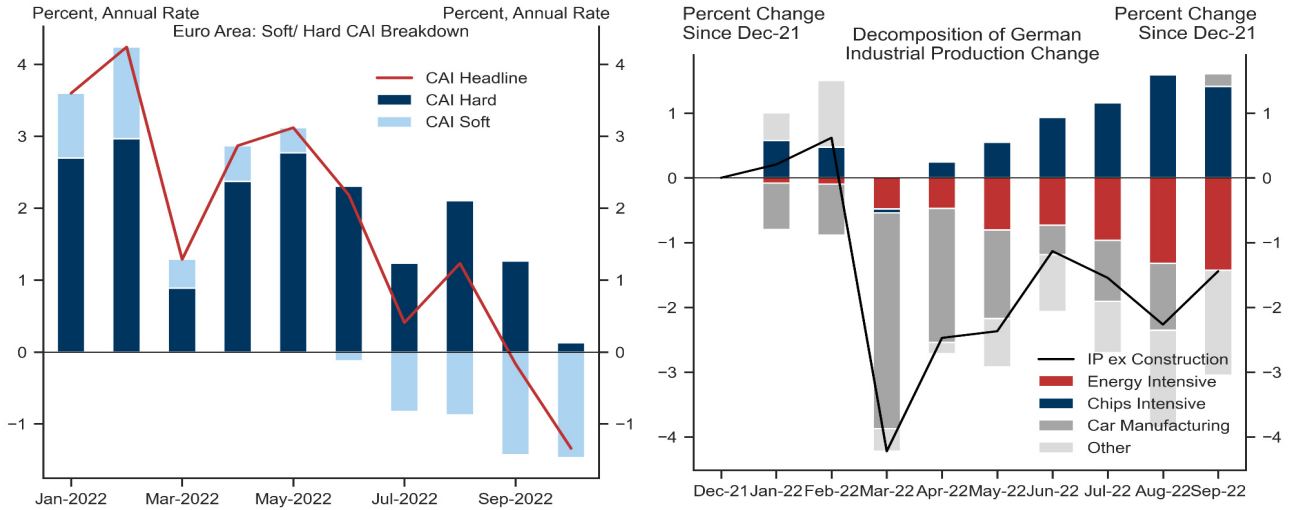
Exhibit 1: A Challenging Outlook for the European Economy



Source: Goldman Sachs Global Investment Research, Haver Analytics

That said, we now expect the Euro area recession to be shallower. First, the incoming data have remained more resilient than expected (Exhibit 2). Real GDP in Q3 surprised to the upside and the hard data coming into Q4 (September industrial production and retail sales) showed continued growth. While some of the resilience in industrial production likely reflects the easing in supply bottlenecks, European manufacturing has (so far) adjusted remarkably well to higher energy prices.

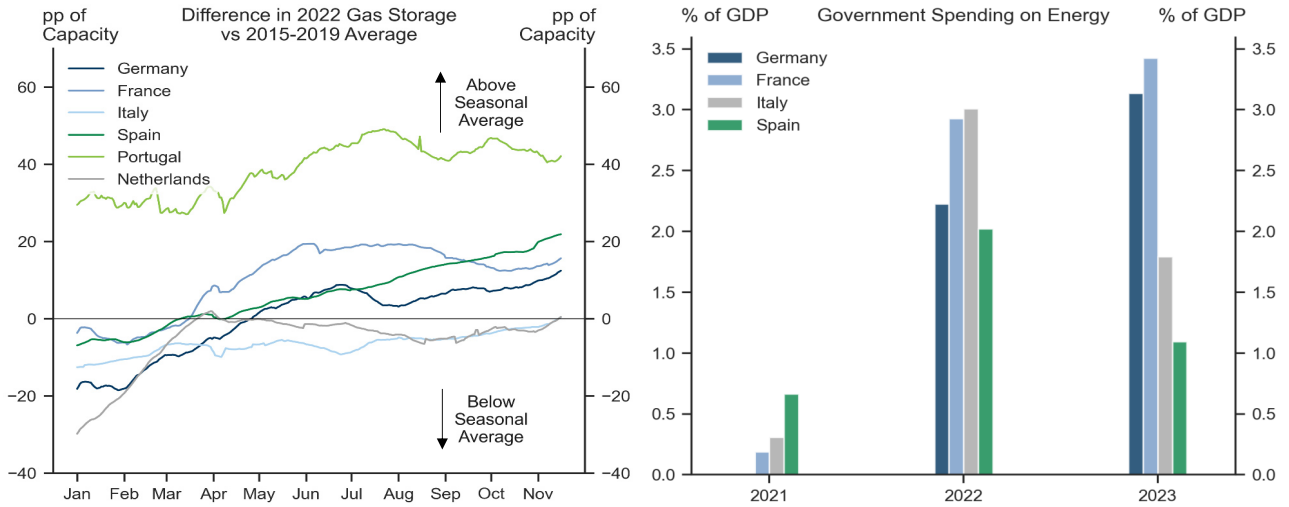
Exhibit 2: The Hard Data Remain Resilient



Source: Goldman Sachs Global Investment Research, Haver Analytics

Second, the rebalancing of the gas market—with a build-up of significant gas storage and sharp declines in gas prices—has reduced the risk of energy rationing this winter (Exhibit 3, left). While a cold winter remains a risk, our estimates suggest that the Euro area should make it through the winter without running out of gas, avoiding costly energy rationing as a result.

Exhibit 3: Gas Storage and Fiscal Support to Cushion the Recession



Source: Goldman Sachs Global Investment Research, Haver Analytics

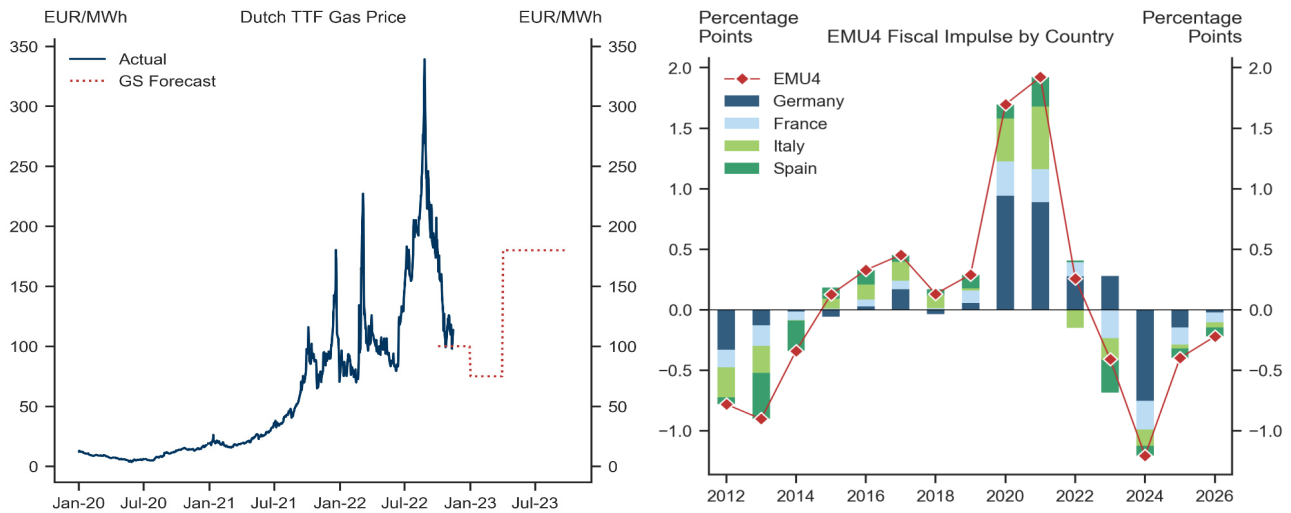
Third, governments have provided significant fiscal support to cushion the growth hit (Exhibit 3, right). Taken together, Euro area governments provided energy support of about 2.5% of GDP in 2022, which we expect to be extended to 2023. These measures—mainly focused on household support—are likely to provide significant offset to the contraction in real incomes.

We therefore revise up Q4 and Q1, pointing to a shallower recession, with a cumulative decline in real GDP of 0.7%. We now expect the Euro area economy to contract by

0.2% in Q4 (vs 0.4% before), 0.4% in Q1 (vs 0.6%) and 0.1% in Q2 (unrevised).

That said, we see several reasons for a muted recovery from the recession. First, Europe’s gas supply situation remains fragile and we expect tensions in the gas market to re-intensify after the winter (Exhibit 4, left). Gas storage is likely to be low after this coming winter and the Euro area will struggle to fill the gas tanks for next winter, especially if China reopens as expected in Q2. While our commodity team has lowered its summer 2023 gas price forecast to EUR180 (vs EUR235 before), they maintain the view that gas prices will have to rise again after the winter to attract sufficient liquid gas to Europe.

Exhibit 4: Drags on the Recovery

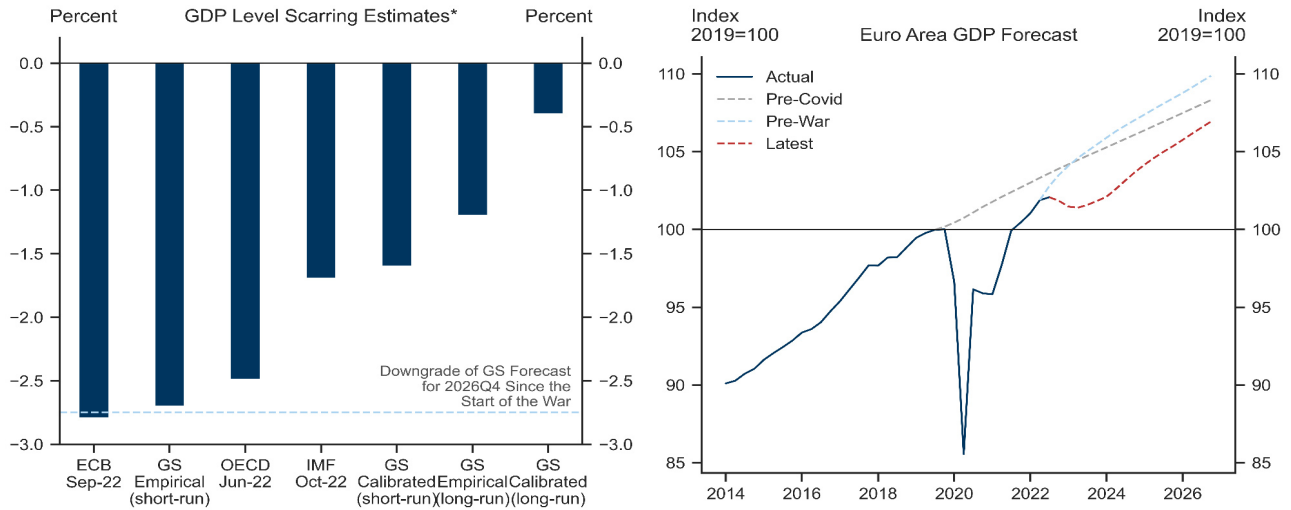


Source: Goldman Sachs Global Investment Research, Haver Analytics

Second, fiscal policy will likely act as a significant drag on growth in 2023-24 as the emergency energy support comes to an end (Exhibit 4, right). While the Recovery Fund and off-budget funds help to cushion the extent of the fiscal drag, we now look for a negative fiscal impulse in 2023 (-0.4pp) and 2024 (-1.1pp).

Third, we see substantial supply-side damage from the energy crisis (Exhibit 5). Economic studies suggest that the reduction in gas supply implies a significant hit to potential output, although economies can lower this cost by substituting away from gas as an input into production over the medium term. Consistent with this, we expect a permanent hit of 2.4% to Euro area output, in sharp contrast to the V-shaped rebound seen from the pandemic.

Exhibit 5: The Permanent Cost of the Energy Crisis

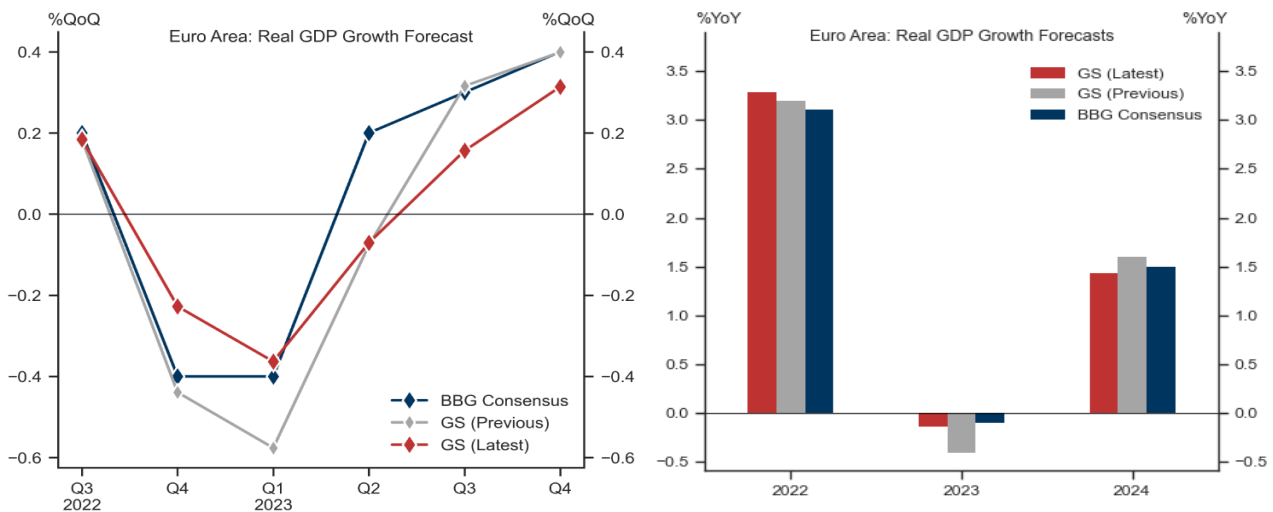


* Scarring estimates are proxied by the shortfall in the level of real GDP with respect to forecast preceding the start of the Russia-Ukraine war. We use the 2026Q4 horizon for the IMF and the OECD and 2024Q4 for the ECB.

Source: Goldman Sachs Global Investment Research, OECD, IMF, ECB

We therefore look for a sluggish recovery from the energy recession and nudge down growth in 2023H2 and 2024Q1. More specifically, we now forecast area-wide growth of 0.2%, 0.3% and 0.4% in 2023Q3, 2023Q4 and 2024Q1 (each down by 0.1pp). Our forecasts are now close to consensus for the next two quarters but slightly below other forecasters for the remainder of 2023 and early 2024. As a result, we now look for -0.1% growth in 2023 (in line with consensus) and 1.4% for 2024 (a bit below the 1.5% consensus). Given the potential for substitution away from gas over time, we now see slightly stronger growth in 2025-27.

Exhibit 6: Shallower Recession, Muted Recovery

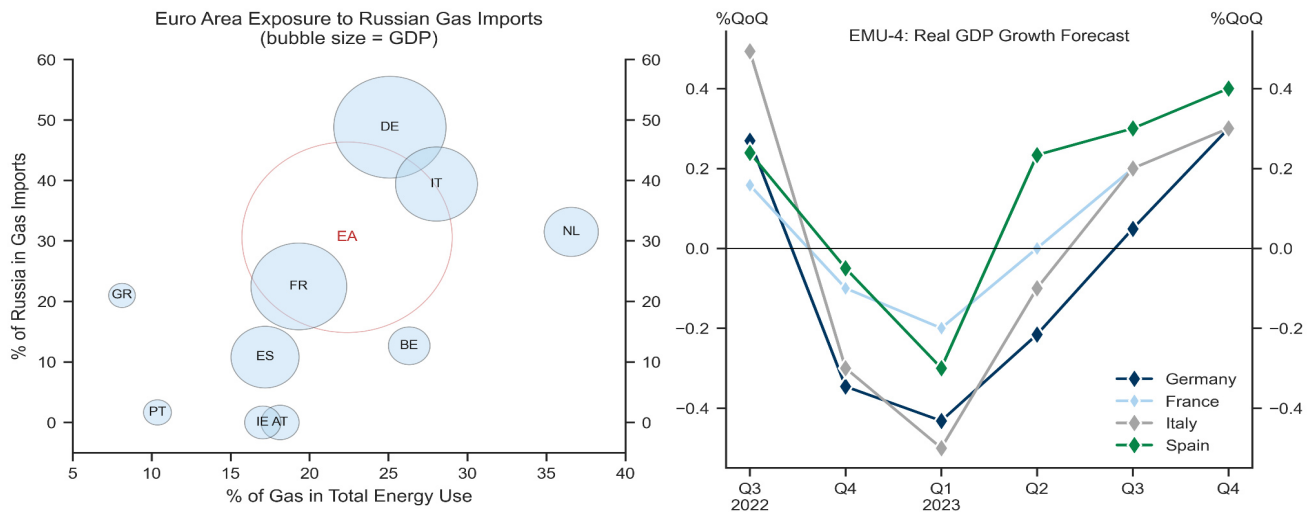


Source: Goldman Sachs Global Investment Research, Bloomberg

Looking across countries, we expect Germany and Italy to be more affected by the energy crisis than France and Spain (Exhibit 7). The most important reason is that Germany and Italy were more reliant on Russian gas imports, while France and Spain

have more diversified energy sources and are relatively more service-sector intensive. This is especially the case for Spain, which still has room to rebound from the covid crisis.

Exhibit 7: A New North vs South Divide



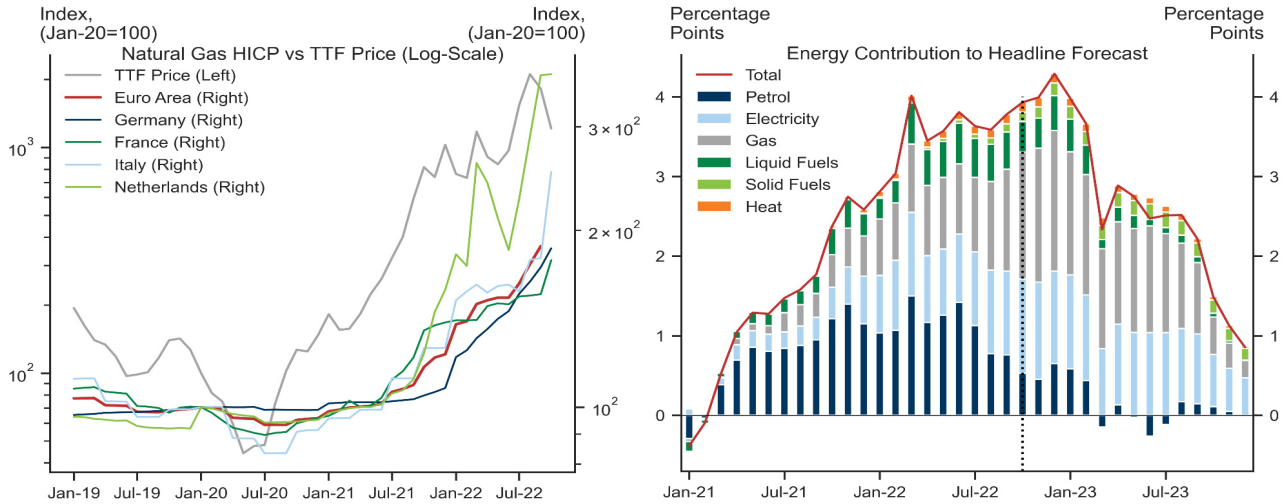
Source: Goldman Sachs Global Investment Research, Eurostat

Inflation Peak in Sight

Although gas prices have fallen significantly since their summer highs, we still see the peak in inflation ahead of us.

Starting with energy, we estimate that current spot gas prices are still above the wholesale gas price implied by the HICP gas component, even considering upcoming price caps. While our commodities team’s lower TTF gas price forecast for the next year reduces our headline projection somewhat, we continue to look for elevated headline pressure (Exhibit 8). Regarding food prices, we see global, rather than local, factors as the predominant driver of Euro area food inflation, and these are unlikely to ease meaningfully in the near term.

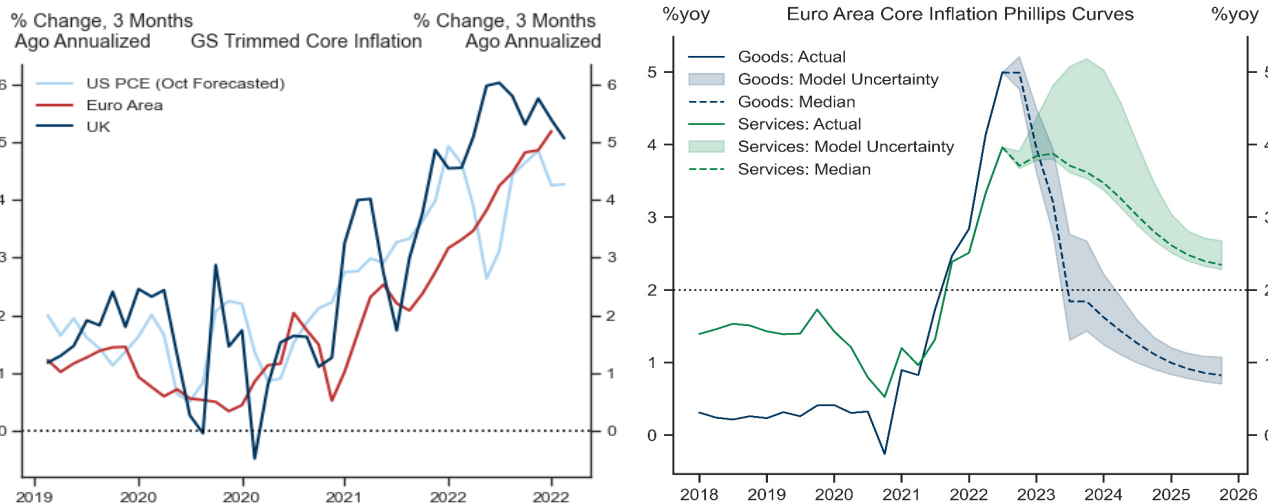
Exhibit 8: More Energy Inflation to Come



Source: Goldman Sachs Global Investment Research, Haver Analytics

Turning to underlying price pressures, we expect sequential core inflation pressures to ease gradually over coming months as goods price inflation weakens. But we find that there is still upward pressure on services inflation due to a delayed pass-through of rising energy and labour costs to consumer prices (Exhibit 9).

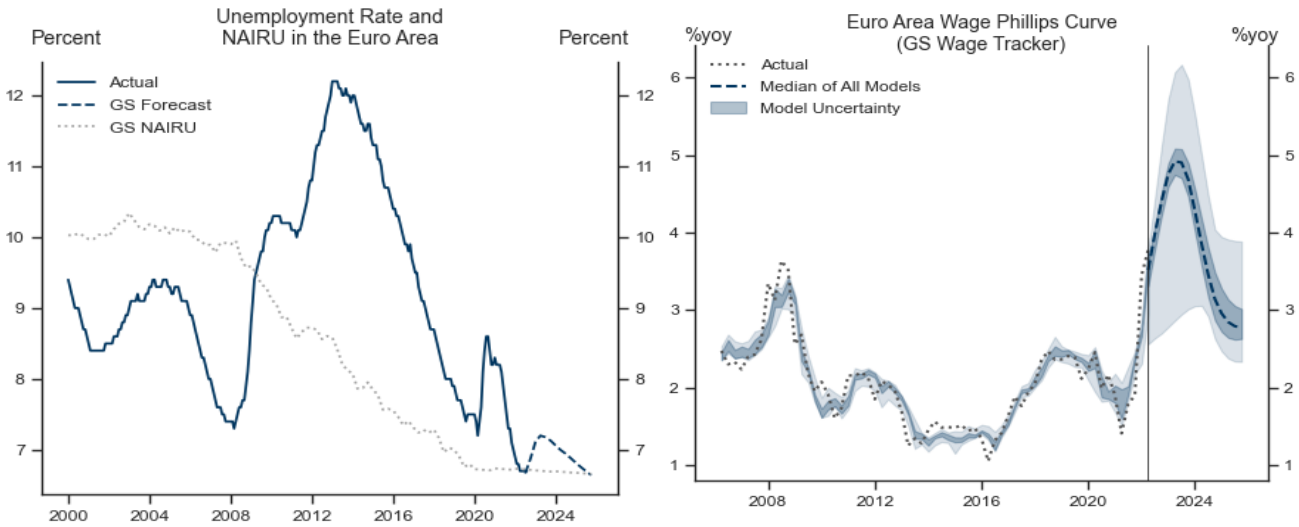
Exhibit 9: Persistent Core Pressures



Source: Goldman Sachs Global Investment Research

The key inflation issue to watch in 2023 is labour cost pressures. Euro area wage growth has picked up to almost 4%, and we expect the recession to push up the area-wide unemployment rate only slightly, from 6.6% to 7.2% in Q2. Combined with continued high headline inflation, we expect wage growth to average around 4.5% in 2023H1, before easing in late 2023 (Exhibit 10). While the stabilisation of long-term inflation expectations suggests that the risk of pronounced second-round effects remains limited, we expect firm wage growth to keep core inflation pressures elevated through 2023.

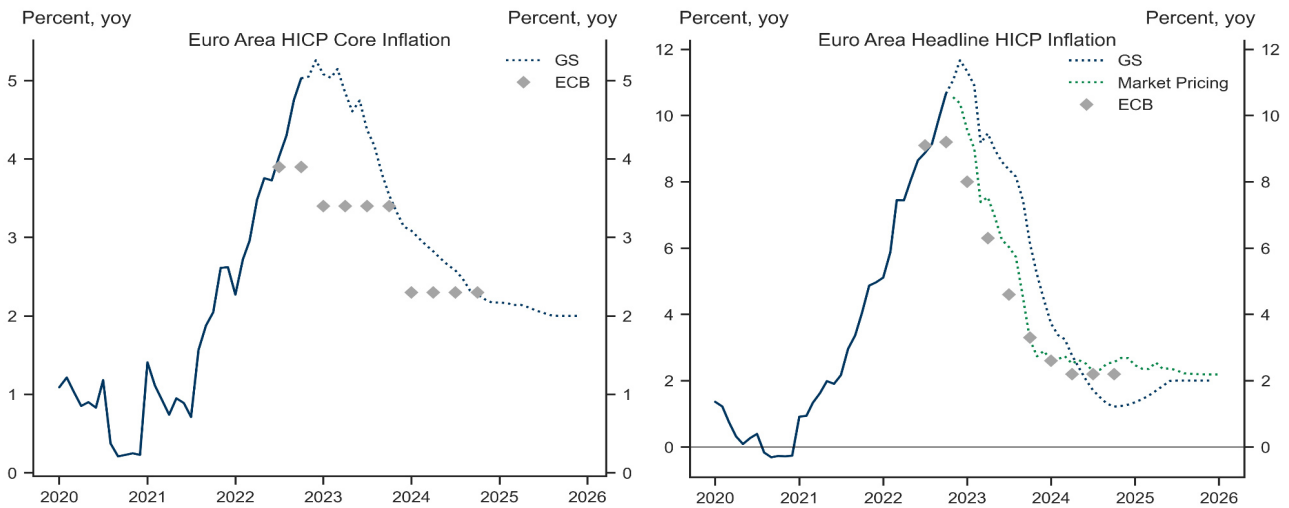
Exhibit 10: Watching Wages



Source: Goldman Sachs Global Investment Research, Haver Analytics

Taken together, we expect headline and core inflation to peak in December at 11.7% and 5.3%, respectively. We then expect inflation pressures to ease but see core inflation above the 2% target for some time, reaching 3.1%, 2.2% and 2% at the end of 2023, 2024 and 2025, respectively. Our inflation forecasts are thus notably above the ECB’s latest projections, as well as current market pricing (Exhibit 11).

Exhibit 11: Inflation Peak in Sight



Source: Goldman Sachs Global Investment Research, Haver Analytics, ECB

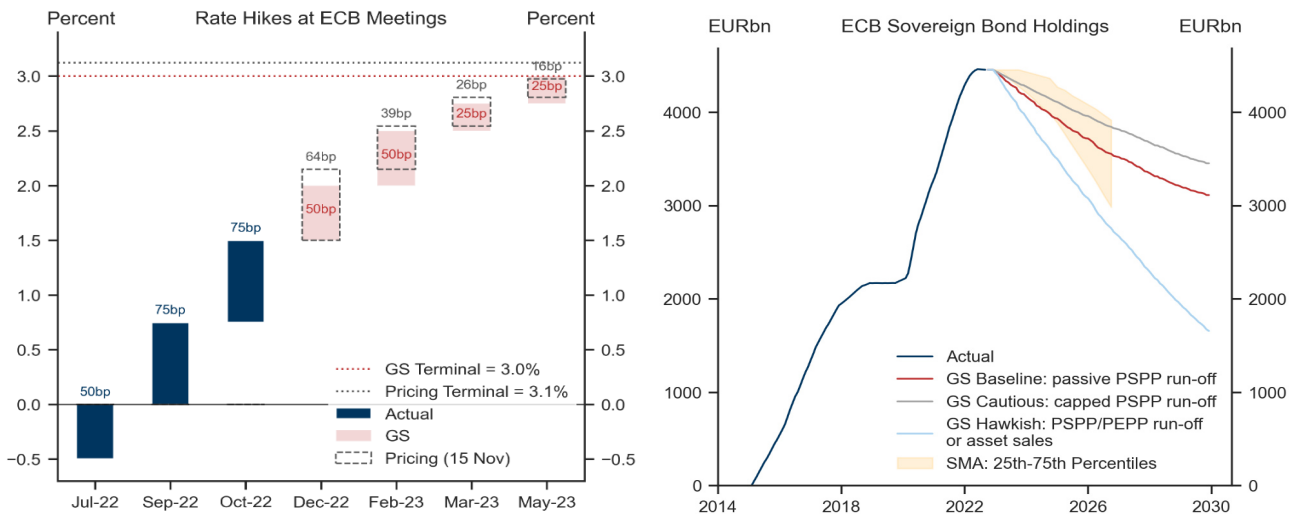
A Higher ECB Terminal Rate

Following rapid ECB hikes, we expect the Governing Council to step down the pace of hiking to 50bp in December. A smaller hiking increment seems likely given that the deposit rate has now approached levels that might be regarded as “neutral” for the inflation outlook, we are expecting a sizeable downward revision to the staff growth forecasts in December, and the Fed is likely to step down to a 50bp hike in December.

While another large upside inflation surprise in November could force the Governing Council into a third 75bp hike in December, a step-down to 50bp looks more likely.

Given our expectations for a shallower recession and ongoing inflation pressures, we now look for the Governing Council to take the deposit rate more clearly into restrictive territory, reaching 3% in May 2023. We look for another 50bp hike in February followed by two 25bp steps in March and May. The risks around our peak 3% ECB rate are two-sided, with (1) upside risk from potentially more persistent core inflation via more pronounced second-round effects, and (2) downside risk from a deeper recession or a possible flare-up in sovereign risk in Italy. We do not look for ECB rate cuts until 2024Q4, two quarters after the Fed and one quarter after the BoE.

Exhibit 12: Higher ECB Terminal Rate, Gradual Balance Sheet Unwind



Source: Goldman Sachs Global Investment Research, Haver Analytics, ECB

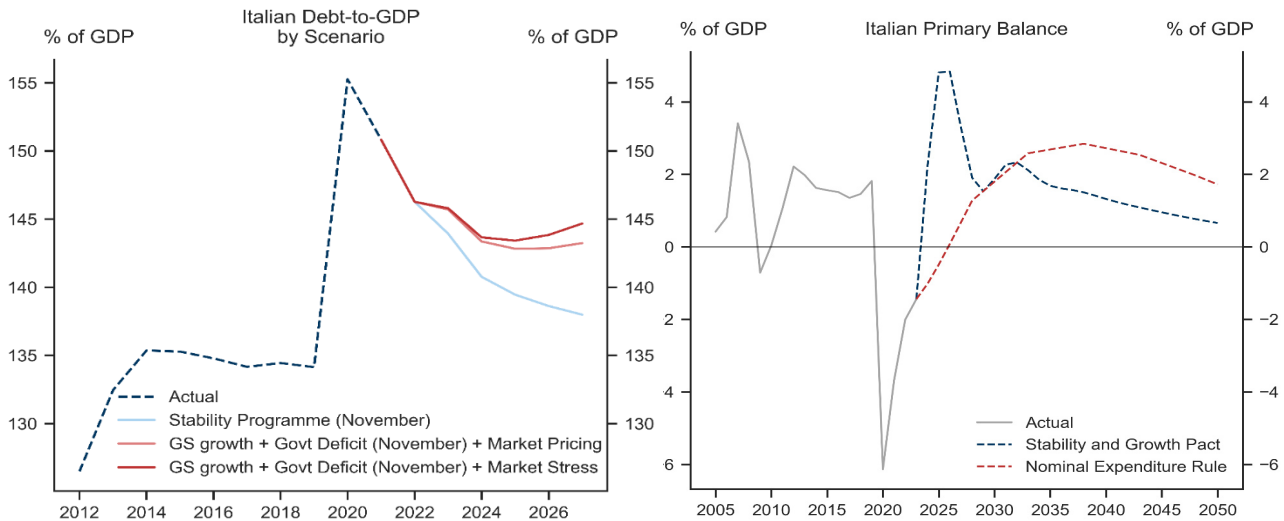
The Governing Council has signalled that it will lay out the principles for QT at the December meeting and we expect ECB officials to decide in Q1 to start a passive unwind of its asset purchase programme (APP) in Q2, which we believe bond markets should be able to digest. It is possible that the Governing Council will announce run-off as soon as December (together with the publication of the broad principles) but a delay between the decision to implement and the actual roll-off seems likely.

Keeping An Eye on Euro Area Political Risk

We will focus on three Euro area political risks in 2023, in addition to developments around the war in Ukraine. First, Italian PM Giorgia Meloni set out the fiscal deficit objectives for 2022 and 2023 (at -5.6% and -4.5% of GDP, respectively), notably higher than planned under the Draghi government due to the extension of energy-related fiscal measures in 2023. However, while the PM’s party continues to gain ground in the opinion polls, some policy uncertainty remains in the run-up to the 2023 budget law. Lowering the effective retirement age would prove most costly, since Italy faces—along with Germany—one of the most difficult demographic outlooks. Rising sovereign yields, high debt and weak growth highlight medium-run vulnerabilities that leave Italy on a narrow fiscal path (Exhibit 13, left).

Second, the French government struggled to build a majority around its 2023 budget and pushed legislation through parliament without a vote (using Article 49.3 of the Constitution). The next legislative hurdle will likely be the pension reform at the start of 2023. The government could again make use of Art. 49.3 or look to build an absolute majority in parliament. The latter would imply either calling for early parliamentary elections or seeking an agreement with an opposition party. As such, we expect the government to seek to limit political uncertainty and look to build a broader majority in parliament to reaffirm its commitment to advancing structural reforms.

Exhibit 13: The Risk of Sovereign Stress Remains



Source: Goldman Sachs Global Investment Research

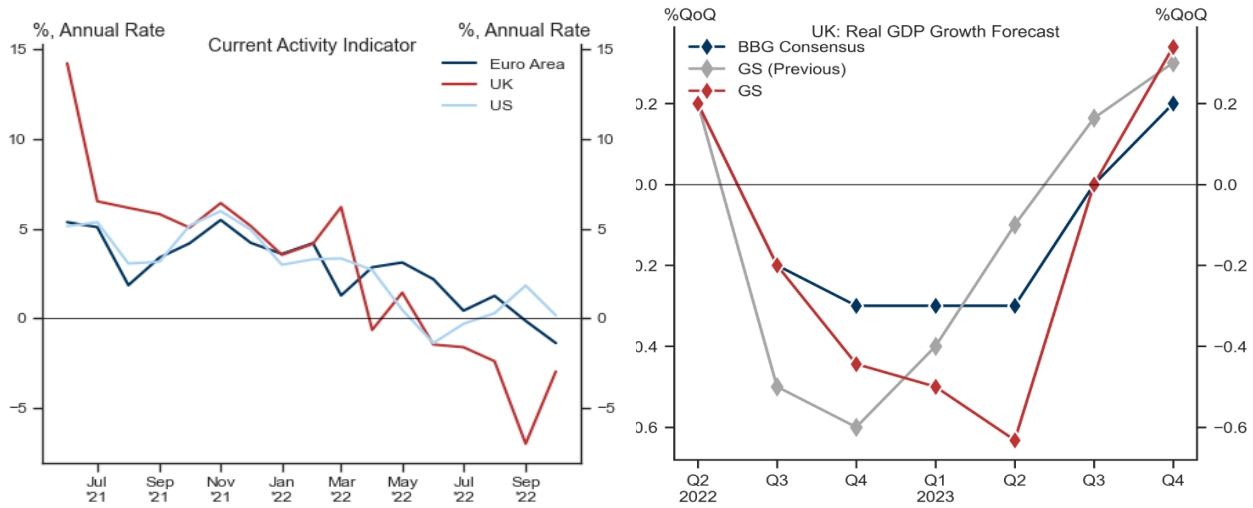
Third, European fiscal rules are coming back into focus after the suspension to accommodate a counter-cyclical fiscal stance during Covid-19. But the European fiscal framework will likely be reinstated in 2024 and, last week, the EU Commission officially started the reform process targeting a set of “simpler, more transparent and effective” rules. The EU communication presented a new three-step process. First, the EU Commission will put forward reference debt paths for every Member State. Then, each country will present its annual budget committing to a fiscal trajectory (a *net expenditure path*) consistent with its medium-term debt target. Finally, the EU Commission and Council will be provided with a richer enforcement toolbox to better achieve the desired growth and fiscal targets. A simple comparison, in the case of Italy, between the primary balance paths implied by the current *Stability and Growth Pact* rules and a nominal expenditure rule illustrates how the new framework could produce a more realistic, and backloaded, fiscal consolidation (Exhibit 13, right).

A Deeper UK Recession, Continued BoE Hikes

While data revisions now suggest a slightly smaller UK contraction in 2022H2, we continue to look for a deeper recession in the UK than in the Euro area through 2023Q2 (-1.7% contraction vs -0.7% in the Euro area). Despite the stronger than expected data flow, growth momentum remains weaker in the UK (Exhibit 14, left). Furthermore, tomorrow’s Autumn Statement is expected to lead to less fiscal support both in the next few quarters and over the medium term. We look for the Energy Price Guarantee (EPG)

to be made less generous but more targeted, with subsidies provided to households in the bottom two income deciles. In addition, a broad freezing of tax thresholds is expected to weigh on growth from Q2 (Exhibit 14, right). Further out, we expect the large cuts to government spending and a sharper tightening in financial conditions to keep annual growth below trend through 2026.

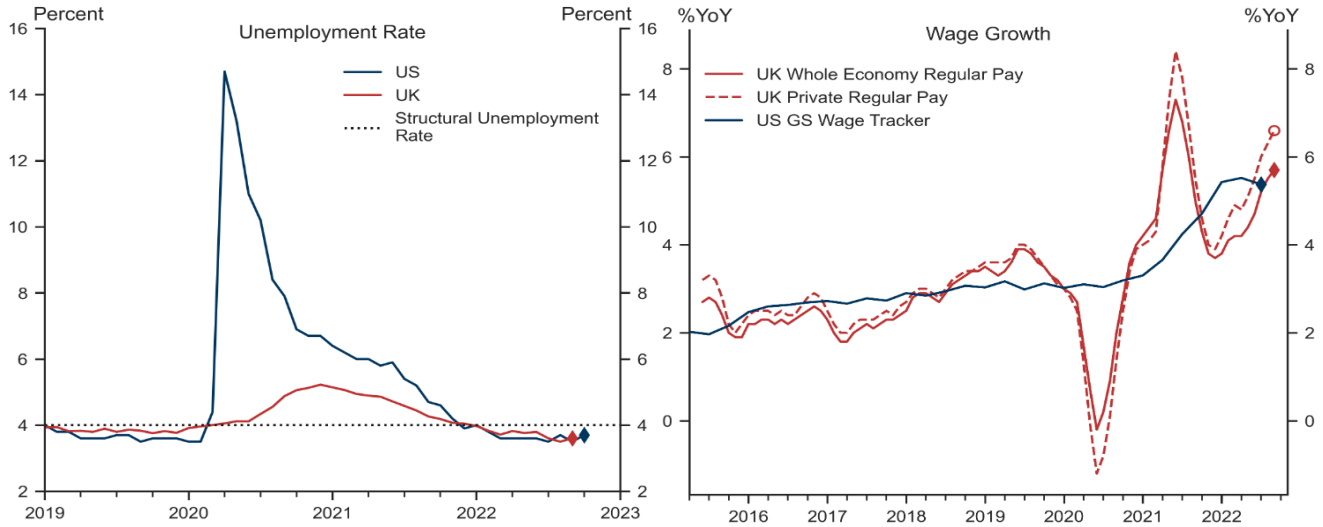
Exhibit 14: A Significant UK Recession



Source: Goldman Sachs Global Investment Research, Bloomberg

Despite the slowing of the economy, the news from the UK labour market has been firm. While the latest release showed a small increase in the unemployment rate, it remains very low and wage growth remains significantly above trend, surprising consensus expectations to the upside. As shown in Exhibit 15, the UK and US labour markets are similarly tight. A focus going forward will be whether the UK is facing greater supply-side issues given the impact of Brexit, and if the high incidence of long-term sickness remains the largest driver of economic inactivity, especially given pressures in the UK health system.

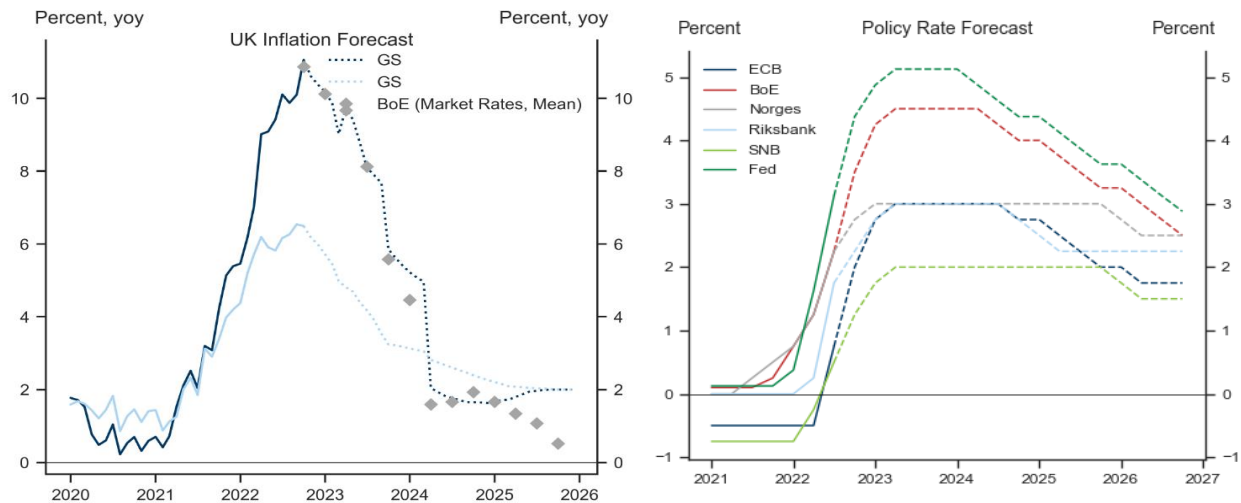
Exhibit 15: A Hot UK Labour Market



Source: Goldman Sachs Global Investment Research, Haver Analytics

Given the tight labour market, strong wage pressures and firm inflation momentum (Exhibit 16, left), we think the BoE needs to take Bank Rate into significantly restrictive territory despite its dovish rhetoric. The tone of the November MPC meeting supported our view that the BoE will more likely than not return to the previous 50bp pace in December. At that point, we see the economy clearly in recession, fiscal consolidation measures will be included in the forecast and other central banks (including the Fed and ECB) will likely also step down their tightening pace. Looking further ahead, we expect another 50bp hike in February, followed by 25bp hikes in March and May for a terminal rate of 4.5% (Exhibit 16, right).

Exhibit 16: More BoE Hikes to Come



Source: Goldman Sachs Global Investment Research, BoE, Haver Analytics

Team Europe

Disclosure Appendix

Reg AC

We, Sven Jari Stehn, Steffan Ball, Christian Schnittker, Filippo Taddei, Ibrahim Quadri and Alexandre Stott, hereby certify that all of the views expressed in this report accurately reflect our personal views, which have not been influenced by considerations of the firm's business or client relationships.

Unless otherwise stated, the individuals listed on the cover page of this report are analysts in Goldman Sachs' Global Investment Research division.

Disclosures

Regulatory disclosures

Disclosures required by United States laws and regulations

See company-specific regulatory disclosures above for any of the following disclosures required as to companies referred to in this report: manager or co-manager in a pending transaction; 1% or other ownership; compensation for certain services; types of client relationships; managed/co-managed public offerings in prior periods; directorships; for equity securities, market making and/or specialist role. Goldman Sachs trades or may trade as a principal in debt securities (or in related derivatives) of issuers discussed in this report.

The following are additional required disclosures: **Ownership and material conflicts of interest:** Goldman Sachs policy prohibits its analysts, professionals reporting to analysts and members of their households from owning securities of any company in the analyst's area of coverage.

Analyst compensation: Analysts are paid in part based on the profitability of Goldman Sachs, which includes investment banking revenues. **Analyst as officer or director:** Goldman Sachs policy generally prohibits its analysts, persons reporting to analysts or members of their households from serving as an officer, director or advisor of any company in the analyst's area of coverage. **Non-U.S. Analysts:** Non-U.S. analysts may not be associated persons of Goldman Sachs & Co. LLC and therefore may not be subject to FINRA Rule 2241 or FINRA Rule 2242 restrictions on communications with subject company, public appearances and trading securities held by the analysts.

Additional disclosures required under the laws and regulations of jurisdictions other than the United States

The following disclosures are those required by the jurisdiction indicated, except to the extent already made above pursuant to United States laws and regulations. **Australia:** Goldman Sachs Australia Pty Ltd and its affiliates are not authorised deposit-taking institutions (as that term is defined in the Banking Act 1959 (Cth)) in Australia and do not provide banking services, nor carry on a banking business, in Australia. This research, and any access to it, is intended only for "wholesale clients" within the meaning of the Australian Corporations Act, unless otherwise agreed by Goldman Sachs. In producing research reports, members of the Global Investment Research Division of Goldman Sachs Australia may attend site visits and other meetings hosted by the companies and other entities which are the subject of its research reports. In some instances the costs of such site visits or meetings may be met in part or in whole by the issuers concerned if Goldman Sachs Australia considers it is appropriate and reasonable in the specific circumstances relating to the site visit or meeting. To the extent that the contents of this document contains any financial product advice, it is general advice only and has been prepared by Goldman Sachs without taking into account a client's objectives, financial situation or needs. A client should, before acting on any such advice, consider the appropriateness of the advice having regard to the client's own objectives, financial situation and needs. A copy of certain Goldman Sachs Australia and New Zealand disclosure of interests and a copy of Goldman Sachs' Australia Sell-Side Research Independence Policy Statement are available at: <https://www.goldmansachs.com/disclosures/australia-new-zealand/index.html>. **Brazil:** Disclosure information in relation to CVM Resolution n. 20 is available at <https://www.gs.com/worldwide/brazil/area/gir/index.html>. Where applicable, the Brazil-registered analyst primarily responsible for the content of this research report, as defined in Article 20 of CVM Resolution n. 20, is the first author named at the beginning of this report, unless indicated otherwise at the end of the text. **Canada:** This information is being provided to you for information purposes only and is not, and under no circumstances should be construed as, an advertisement, offering or solicitation by Goldman Sachs & Co. LLC for purchasers of securities in Canada to trade in any Canadian security. Goldman Sachs & Co. LLC is not registered as a dealer in any jurisdiction in Canada under applicable Canadian securities laws and generally is not permitted to trade in Canadian securities and may be prohibited from selling certain securities and products in certain jurisdictions in Canada. If you wish to trade in any Canadian securities or other products in Canada please contact Goldman Sachs Canada Inc., an affiliate of The Goldman Sachs Group Inc., or another registered Canadian dealer. **Hong Kong:** Further information on the securities of covered companies referred to in this research may be obtained on request from Goldman Sachs (Asia) L.L.C. **India:** Further information on the subject company or companies referred to in this research may be obtained from Goldman Sachs (India) Securities Private Limited, Research Analyst - SEBI Registration Number INH000001493, 951-A, Rational House, Appasaheb Marathe Marg, Prabhadevi, Mumbai 400 025, India, Corporate Identity Number U74140MH2006FTC160634, Phone +91 22 6616 9000, Fax +91 22 6616 9001. Goldman Sachs may beneficially own 1% or more of the securities (as such term is defined in clause 2 (h) the Indian Securities Contracts (Regulation) Act, 1956) of the subject company or companies referred to in this research report. **Japan:** See below. **Korea:** This research, and any access to it, is intended only for "professional investors" within the meaning of the Financial Services and Capital Markets Act, unless otherwise agreed by Goldman Sachs. Further information on the subject company or companies referred to in this research may be obtained from Goldman Sachs (Asia) L.L.C., Seoul Branch. **New Zealand:** Goldman Sachs New Zealand Limited and its affiliates are neither "registered banks" nor "deposit takers" (as defined in the Reserve Bank of New Zealand Act 1989) in New Zealand. This research, and any access to it, is intended for "wholesale clients" (as defined in the Financial Advisers Act 2008) unless otherwise agreed by Goldman Sachs. A copy of certain Goldman Sachs Australia and New Zealand disclosure of interests is available at: <https://www.goldmansachs.com/disclosures/australia-new-zealand/index.html>. **Russia:** Research reports distributed in the Russian Federation are not advertising as defined in the Russian legislation, but are information and analysis not having product promotion as their main purpose and do not provide appraisal within the meaning of the Russian legislation on appraisal activity. Research reports do not constitute a personalized investment recommendation as defined in Russian laws and regulations, are not addressed to a specific client, and are prepared without analyzing the financial circumstances, investment profiles or risk profiles of clients. Goldman Sachs assumes no responsibility for any investment decisions that may be taken by a client or any other person based on this research report. **Singapore:** Goldman Sachs (Singapore) Pte. (Company Number: 198602165W), which is regulated by the Monetary Authority of Singapore, accepts legal responsibility for this research, and should be contacted with respect to any matters arising from, or in connection with, this research. **Taiwan:** This material is for reference only and must not be reprinted without permission. Investors should carefully consider their own investment risk. Investment results are the responsibility of the individual investor. **United Kingdom:** Persons who would be categorized as retail clients in the United Kingdom, as such term is defined in the rules of the Financial Conduct Authority, should read this research in conjunction with prior Goldman Sachs research on the covered companies referred to herein and should refer to the risk warnings that have been sent to them by Goldman Sachs International. A copy of these risks warnings, and a glossary of certain financial terms used in this report, are available from Goldman Sachs International on request.

European Union and United Kingdom: Disclosure information in relation to Article 6 (2) of the European Commission Delegated Regulation (EU) (2016/958) supplementing Regulation (EU) No 596/2014 of the European Parliament and of the Council (including as that Delegated Regulation is implemented into United Kingdom domestic law and regulation following the United Kingdom's departure from the European Union and the European Economic Area) with regard to regulatory technical standards for the technical arrangements for objective presentation of investment recommendations or other information recommending or suggesting an investment strategy and for disclosure of particular interests or indications of

conflicts of interest is available at <https://www.gs.com/disclosures/europeanpolicy.html> which states the European Policy for Managing Conflicts of Interest in Connection with Investment Research.

Japan: Goldman Sachs Japan Co., Ltd. is a Financial Instrument Dealer registered with the Kanto Financial Bureau under registration number Kinsho 69, and a member of Japan Securities Dealers Association, Financial Futures Association of Japan and Type II Financial Instruments Firms Association. Sales and purchase of equities are subject to commission pre-determined with clients plus consumption tax. See company-specific disclosures as to any applicable disclosures required by Japanese stock exchanges, the Japanese Securities Dealers Association or the Japanese Securities Finance Company.

Global product; distributing entities

The Global Investment Research Division of Goldman Sachs produces and distributes research products for clients of Goldman Sachs on a global basis. Analysts based in Goldman Sachs offices around the world produce research on industries and companies, and research on macroeconomics, currencies, commodities and portfolio strategy. This research is disseminated in Australia by Goldman Sachs Australia Pty Ltd (ABN 21 006 797 897); in Brazil by Goldman Sachs do Brasil Corretora de Títulos e Valores Mobiliários S.A.; Public Communication Channel Goldman Sachs Brazil: 0800 727 5764 and / or contatogoldmanbrasil@gs.com. Available Weekdays (except holidays), from 9am to 6pm. Canal de Comunicação com o Público Goldman Sachs Brasil: 0800 727 5764 e/ou contatogoldmanbrasil@gs.com. Horário de funcionamento: segunda-feira à sexta-feira (exceto feriados), das 9h às 18h; in Canada by Goldman Sachs & Co. LLC; in Hong Kong by Goldman Sachs (Asia) L.L.C.; in India by Goldman Sachs (India) Securities Private Ltd.; in Japan by Goldman Sachs Japan Co., Ltd.; in the Republic of Korea by Goldman Sachs (Asia) L.L.C., Seoul Branch; in New Zealand by Goldman Sachs New Zealand Limited; in Russia by OOO Goldman Sachs; in Singapore by Goldman Sachs (Singapore) Pte. (Company Number: 198602165W); and in the United States of America by Goldman Sachs & Co. LLC. Goldman Sachs International has approved this research in connection with its distribution in the United Kingdom.

Effective from the date of the United Kingdom's departure from the European Union and the European Economic Area ("Brexit Day") the following information with respect to distributing entities will apply:

Goldman Sachs International ("GSI"), authorised by the Prudential Regulation Authority ("PRA") and regulated by the Financial Conduct Authority ("FCA") and the PRA, has approved this research in connection with its distribution in the United Kingdom.

European Economic Area: GSI, authorised by the PRA and regulated by the FCA and the PRA, disseminates research in the following jurisdictions within the European Economic Area: the Grand Duchy of Luxembourg, Italy, the Kingdom of Belgium, the Kingdom of Denmark, the Kingdom of Norway, the Republic of Finland, the Republic of Cyprus and the Republic of Ireland; GS - Succursale de Paris (Paris branch) which, from Brexit Day, will be authorised by the French Autorité de contrôle prudentiel et de résolution ("ACPR") and regulated by the Autorité de contrôle prudentiel et de résolution and the Autorité des marchés financiers ("AMF") disseminates research in France; GSI - Sucursal en España (Madrid branch) authorized in Spain by the Comisión Nacional del Mercado de Valores disseminates research in the Kingdom of Spain; GSI - Sweden Bankfilial (Stockholm branch) is authorized by the SFSÅ as a "third country branch" in accordance with Chapter 4, Section 4 of the Swedish Securities and Market Act (Sw. lag (2007:528) om värdepappersmarknaden) disseminates research in the Kingdom of Sweden; Goldman Sachs Bank Europe SE ("GSBE") is a credit institution incorporated in Germany and, within the Single Supervisory Mechanism, subject to direct prudential supervision by the European Central Bank and in other respects supervised by German Federal Financial Supervisory Authority (Bundesanstalt für Finanzdienstleistungsaufsicht, BaFin) and Deutsche Bundesbank and disseminates research in the Federal Republic of Germany and those jurisdictions within the European Economic Area where GSI is not authorised to disseminate research and additionally, GSBE, Copenhagen Branch filial af GSBE, Tyskland, supervised by the Danish Financial Authority disseminates research in the Kingdom of Denmark; GSBE - Sucursal en España (Madrid branch) subject (to a limited extent) to local supervision by the Bank of Spain disseminates research in the Kingdom of Spain; GSBE - Succursale Italia (Milan branch) to the relevant applicable extent, subject to local supervision by the Bank of Italy (Banca d'Italia) and the Italian Companies and Exchange Commission (Commissione Nazionale per le Società e la Borsa "Consob") disseminates research in Italy; GSBE - Succursale de Paris (Paris branch), supervised by the AMF and by the ACPR disseminates research in France; and GSBE - Sweden Bankfilial (Stockholm branch), to a limited extent, subject to local supervision by the Swedish Financial Supervisory Authority (Finansinspektionen) disseminates research in the Kingdom of Sweden.

General disclosures

This research is for our clients only. Other than disclosures relating to Goldman Sachs, this research is based on current public information that we consider reliable, but we do not represent it is accurate or complete, and it should not be relied on as such. The information, opinions, estimates and forecasts contained herein are as of the date hereof and are subject to change without prior notification. We seek to update our research as appropriate, but various regulations may prevent us from doing so. Other than certain industry reports published on a periodic basis, the large majority of reports are published at irregular intervals as appropriate in the analyst's judgment.

Goldman Sachs conducts a global full-service, integrated investment banking, investment management, and brokerage business. We have investment banking and other business relationships with a substantial percentage of the companies covered by our Global Investment Research Division. Goldman Sachs & Co. LLC, the United States broker dealer, is a member of SIPC (<https://www.sipc.org>).

Our salespeople, traders, and other professionals may provide oral or written market commentary or trading strategies to our clients and principal trading desks that reflect opinions that are contrary to the opinions expressed in this research. Our asset management area, principal trading desks and investing businesses may make investment decisions that are inconsistent with the recommendations or views expressed in this research.

We and our affiliates, officers, directors, and employees, will from time to time have long or short positions in, act as principal in, and buy or sell, the securities or derivatives, if any, referred to in this research, unless otherwise prohibited by regulation or Goldman Sachs policy.

The views attributed to third party presenters at Goldman Sachs arranged conferences, including individuals from other parts of Goldman Sachs, do not necessarily reflect those of Global Investment Research and are not an official view of Goldman Sachs.

Any third party referenced herein, including any salespeople, traders and other professionals or members of their household, may have positions in the products mentioned that are inconsistent with the views expressed by analysts named in this report.

This research is focused on investment themes across markets, industries and sectors. It does not attempt to distinguish between the prospects or performance of, or provide analysis of, individual companies within an industry or sector we describe.

Any trading recommendation in this research relating to an equity or credit security or securities within an industry or sector is reflective of the investment theme being discussed and is not a recommendation of any such security in isolation.

This research is not an offer to sell or the solicitation of an offer to buy any security in any jurisdiction where such an offer or solicitation would be illegal. It does not constitute a personal recommendation or take into account the particular investment objectives, financial situations, or needs of individual clients. Clients should consider whether any advice or recommendation in this research is suitable for their particular circumstances and, if appropriate, seek professional advice, including tax advice. The price and value of investments referred to in this research and the income from them may fluctuate. Past performance is not a guide to future performance, future returns are not guaranteed, and a loss of original capital may occur. Fluctuations in exchange rates could have adverse effects on the value or price of, or income derived from, certain investments.

Certain transactions, including those involving futures, options, and other derivatives, give rise to substantial risk and are not suitable for all investors. Investors should review current options and futures disclosure documents which are available from Goldman Sachs sales representatives or at <https://www.theocc.com/about/publications/character-risks.jsp> and https://www.fiadocumentation.org/fia/regulatory-disclosures_1/fia-uniform-futures-and-options-on-futures-risk-disclosures-booklet-pdf-version-2018. Transaction costs may be significant in option strategies calling for multiple purchase and sales of options such as spreads. Supporting documentation will be supplied upon request.

Differing Levels of Service provided by Global Investment Research: The level and types of services provided to you by the Global Investment Research division of GS may vary as compared to that provided to internal and other external clients of GS, depending on various factors including your individual preferences as to the frequency and manner of receiving communication, your risk profile and investment focus and perspective (e.g., marketwide, sector specific, long term, short term), the size and scope of your overall client relationship with GS, and legal and regulatory constraints. As an example, certain clients may request to receive notifications when research on specific securities is published, and certain clients may request that specific data underlying analysts' fundamental analysis available on our internal client websites be delivered to them electronically through data feeds or otherwise. No change to an analyst's fundamental research views (e.g., ratings, price targets, or material changes to earnings estimates for equity securities), will be communicated to any client prior to inclusion of such information in a research report broadly disseminated through electronic publication to our internal client websites or through other means, as necessary, to all clients who are entitled to receive such reports.

All research reports are disseminated and available to all clients simultaneously through electronic publication to our internal client websites. Not all research content is redistributed to our clients or available to third-party aggregators, nor is Goldman Sachs responsible for the redistribution of our research by third party aggregators. For research, models or other data related to one or more securities, markets or asset classes (including related services) that may be available to you, please contact your GS representative or go to <https://research.gs.com>.

Disclosure information is also available at <https://www.gs.com/research/hedge.html> or from Research Compliance, 200 West Street, New York, NY 10282.

© 2022 Goldman Sachs.

No part of this material may be (i) copied, photocopied or duplicated in any form by any means or (ii) redistributed without the prior written consent of The Goldman Sachs Group, Inc.